

PENRITH CITY COUNCIL

TRINITY DRIVE - JUNIOR PLAYSPACE RENEWAL

SEPTEMBER 2021 - REV A FOR COUNCIL REVIEW ONLY

PENRITH
CITY COUNCIL **PLA'CE**

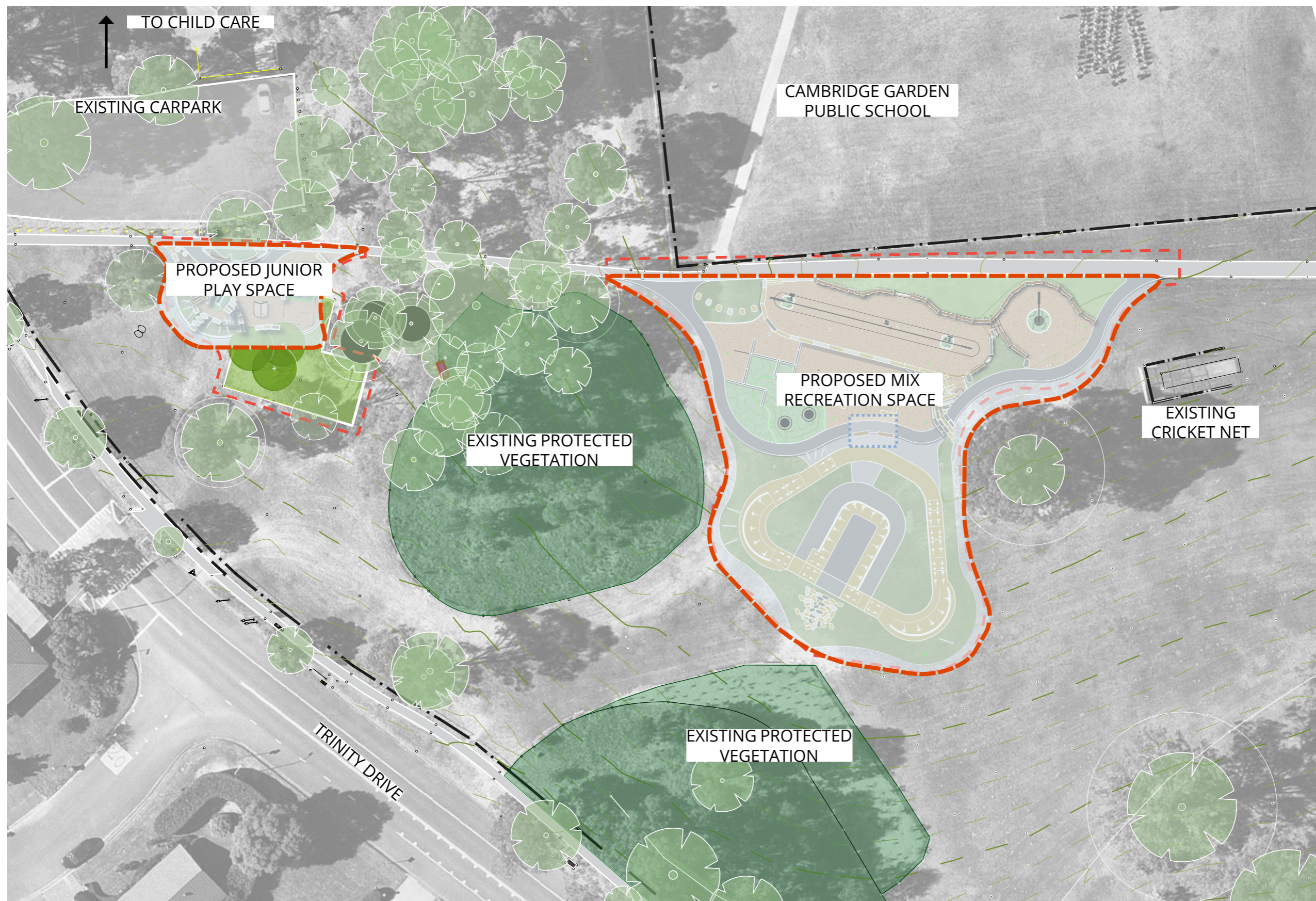


JUNIOR PLAY SPACE

Replacing the existing play space, this new junior play space adopts a nature-based design approach to reflect the context of the surrounding environment. Combinations of rock scrambles and edging, balance logs interspersed with traditional play elements such as swings and a slide, cater to the needs of younger children, toddlers through to preschool. The use of natural materials, provides a sensory overlay to the playspace, an important aspect for junior play experience. Further to this, a sensory zone with feature carved rocks and cubby provides an abundance of opportunities for social and imaginative play to foster creative development.

Providing a space that caters to the younger demographic is well suited to the area as it is adjacent to wattle glenn children's centre and rainbow cottage children's centre. This complements the more active mixed recreation space that is being developed further to the south, adjacent to cambridge gardens primary school.

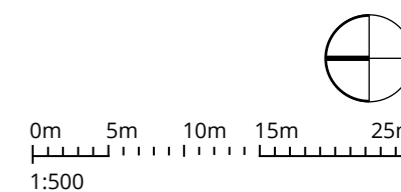
Consultation for the mixed recreation space was complete in 2018, with consultation conducted with students from cambridge gardens public school and an onsite drop-in session. The key outcomes from the consultation were for a space that provided plenty of active opportunities such as parkour, climbing walls, and skate elements.



PENRITH CITY COUNCIL

TRINITY DRIVE JUNIOR PLAYSPACE

SCHEMATIC DESIGN - SITE CONTEXT PLAN



Date: 10.09.2021
Rev: A

PENRITH
CITY COUNCIL

PLA'CE

Page Number. 03



LEGEND

- EXTENT OF WORKS
- EXISTING PLAYGROUND OUTLINE
- FALL ZONE
- SOFT FALL RUBBER
- SOFT FALL MULCH WITH CONCRETE EDGE
- PROPOSED CONCRETE PATH
- EXISTING CONCRETE PATH
- SHADE SAIL STRUCTURE
- PROPOSED PLANTING
- EXISTING PROTECTED VEGETATION
- GRASS
- PROPOSED TREE
- EXISTING TREE
- EXISTING POST & RAIL FENCE
- EXISTING BOLLARDS
- BENCH SEAT
- ROCK EMBANKMENT
- PLAY LOGS
- CARVED ROCK SCULPTURE



0m 2m 4m 6m 10m
1:200 @A3

Date: 10.09.2021
Rev: A

PENRITH CITY COUNCIL

TRINITY DRIVE JUNIOR PLAYSPACE

SCHEMATIC DESIGN - JUNIOR PLAYSPACE PLAN



MOUND SLIDE



PLANTED MOUND



BALANCE STEPPERS



DOUBLE SWING



PLAY CUBBY WITH SHOP FRONT



CARVED FEATURE ROCK



ROCK SCRAMBLE



SHADE SAIL STRUCTURE

NOTE: INDICATIVE IMAGES SHOWING POTENTIAL ELEMENTS
FOR TRINITY DRIVE JUNIOR PLAY SPACE