

## Factory Road Reserve Kayak Launch Deck

Penrith City Council is planning to build two new launch decks at the Nepean River to make it safer and easier to access the water and enjoy kayaking, canoeing and even stand-up paddle boarding. Concept designs for the two new launch sites at River Road, Leonay and at Factory Road Reserve, Regentville have been prepared.

The planned launch deck at Factory Road Reserve includes;

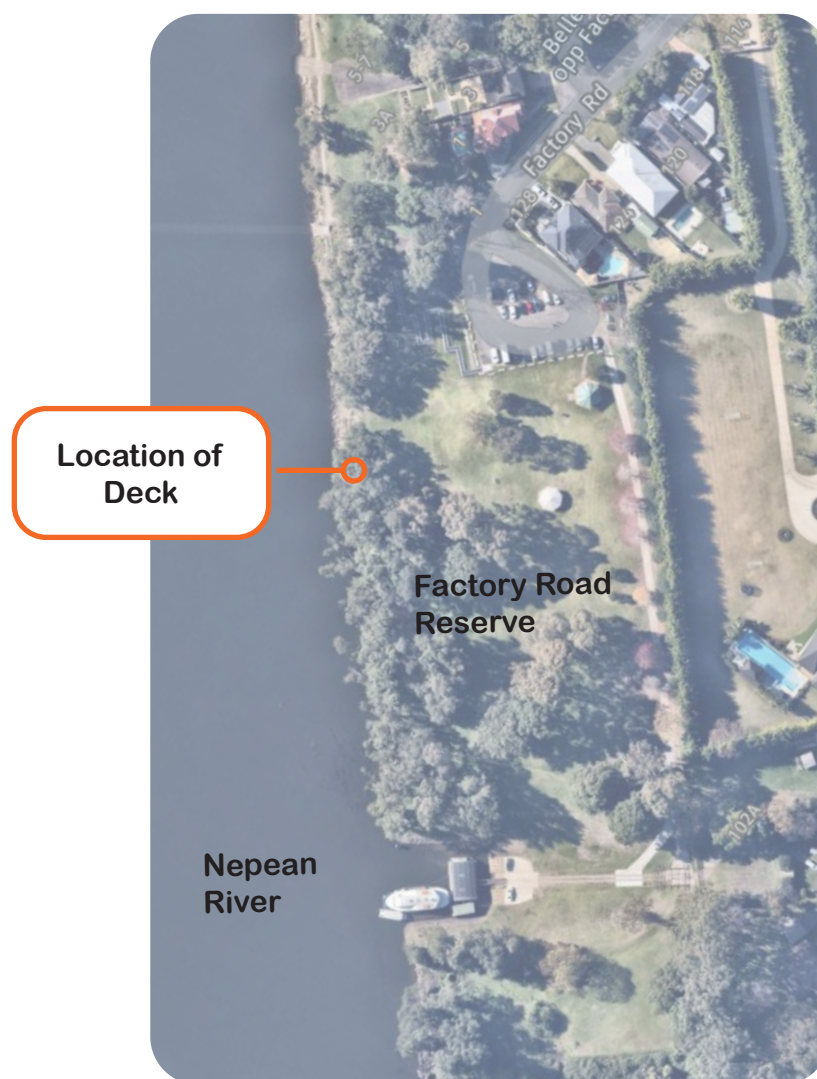
- A new launch deck
- Access paths connecting down to the water's edge
- Informal sandstone seating
- Signage and Landscaping

### CONTACT US

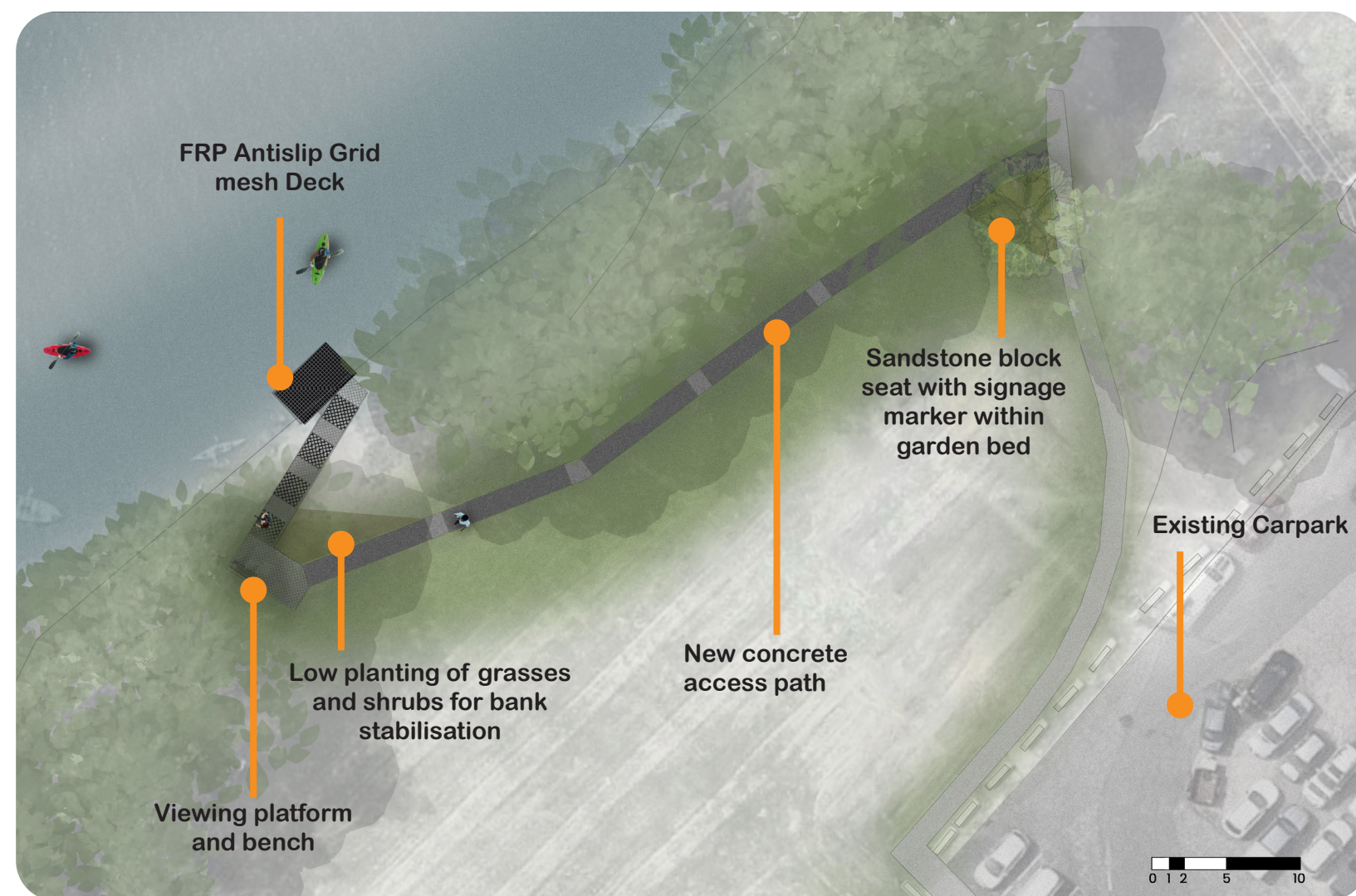
Design and Projects

Phone: 02 4732 7777

[yoursaypenrith.com.au/launchdecks](https://yoursaypenrith.com.au/launchdecks)



LOCATION PLAN



CONCEPT PLAN