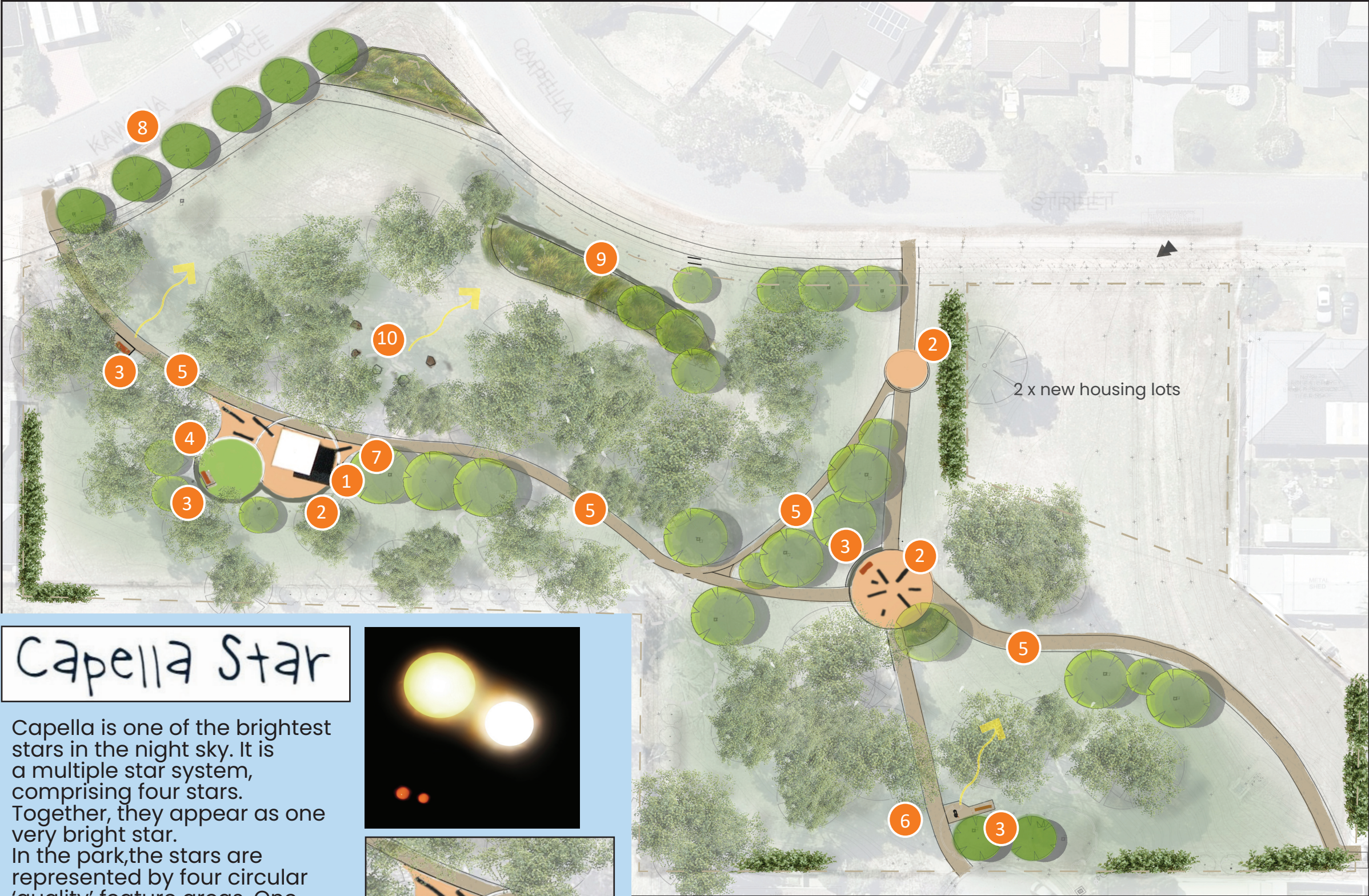


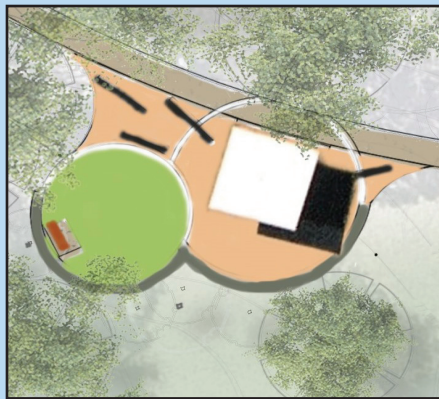
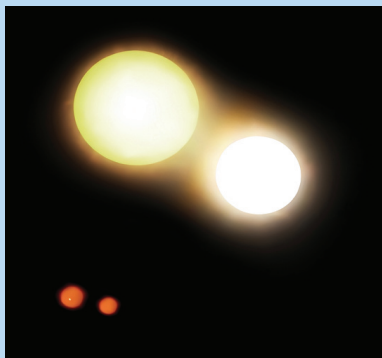
# Capella Reserve, Erskine Park upgrade - Concept



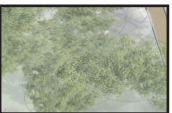
- 1 new picnic shelter with accessible picnic setting
- 2 feature paved areas
- 3 new accessible seating with backs and armrests
- 4 turf circle for cooling, play & spillover space from picnic shelter. the turf circle will be edged with a low retaining wall, providing additional seating opportunities
- 5 new path works
- 6 new bubbler with dog bowl
- 7 new bin
- 8 new green edge to park with new street trees on Kawana Place
- 9 rectification works to erosion on slope with soil stabilisation and planting of low growing native ground covers & shrubs to reduce further soil loss & to green the edge of park
- 10 natural space for quiet play or rest. possibilities include a small metal natural sculptural element for passive play.

## Capella Star

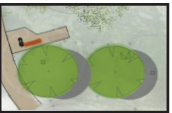
Capella is one of the brightest stars in the night sky. It is a multiple star system, comprising four stars. Together, they appear as one very bright star. In the park, the stars are represented by four circular 'quality' feature areas. One of them, the turf circle, is located adjacent to the shelter, while the other three are circular spaces paved with decomposed granite, decorative infill & edging. These spaces serve as focal points for seating or meeting.



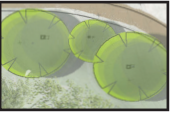
Capella Reserve is approximately 2 acres in size and it serves as a local park for passive recreation. While providing quality materials, the level of development and hard elements in the upgrade to the Reserve will be sympathetic to the bushland setting. The upgraded Reserve will provide the community with opportunities to walk, rest and have picnics, offering a peaceful and enjoyable space for connecting to nature.



existing trees



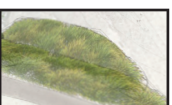
new street trees on Kawana PI



new tree planting within the park to cool and to shade new pathworks and add valuable biodiversity



new shrub planting to soften & green the metal fence edges to park



new low planting to halt erosion and soil loss off site, as well as add to valuable biodiversity



filtered views at rest stops retained



## PRECEDENT IMAGES - ELEMENTS



Cantilevered picnic shelter



New paths & accessible seating opportunities, including companion space on slab wheelchair or pram



Accessible picnic setting



New bubbler, including dog bowl



Precedent example of natural quiet play space/sculptural installation

### Existing plants

The existing bushland at Capella Reserve is a Cumberland Plain Woodland community. Due to the spread of the city and other human activities this ecosystem has been severely degraded and fragmented over the years. The Cumberland Plain Woodland is now considered one of the most critically endangered ecological communities in Australia. The woodland in the Reserve is protected. The design of the Capella Reserve upgrade aims to increase the Reserve's biodiversity and address the issue of erosion and critical soil losses off the site.



### New proposed plants

Shrubs such as bottlebrush will be used to soften and green some of the metal fence edges to the reserve

Small trees such as Snow in summer paperbark will be planted in Kawana Place as street trees

New tree planting in the park will be a mix of smaller trees, such as paperbark trees and larger trees eg gum trees. Species selected will supplement existing Cumberland plain species currently in the reserve, eg, Spotted gum, broad leaved iron bark and forest red gum.

Some native grasses will be used to assist in the stabilisation of soils to the site

## PRECEDENT IMAGES - PLANTS



Bottlebrush



Snow in summer - paperbark



spotted gum



Broad leaved iron bark



Mix of native grasses - in contained beds to assist in stabilising soils