

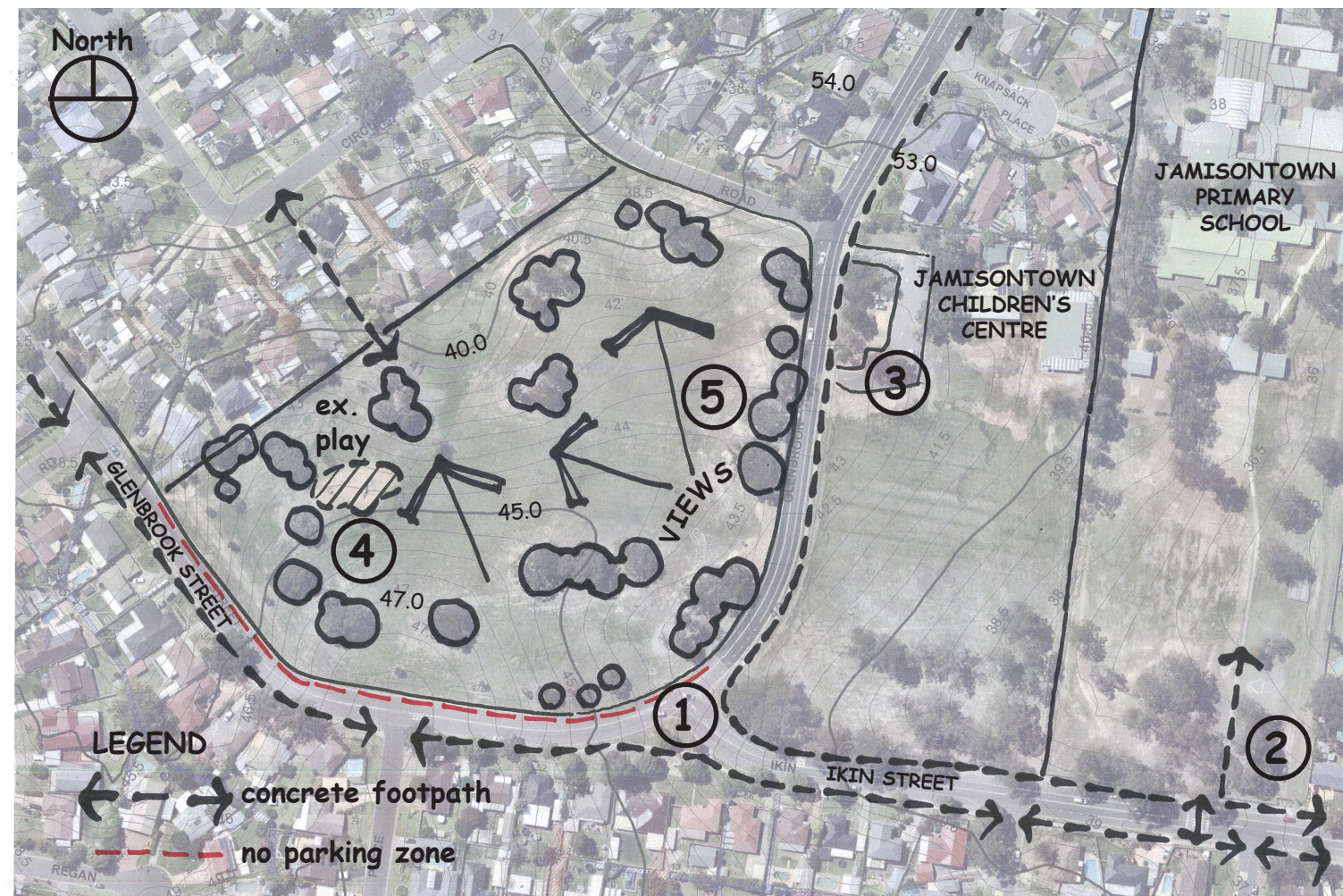
1 & 2.

Intersection of Ikin Street and Glenbrook Rd:

- Busy traffic intersection - dangerous crossing point for pedestrians accessing Robinson Park.
- Concrete footpath along both sides of Ikin St and south side of Glenbrook St.
- Route to public school main entry.



3. Jamisontown Children's Centre:
- Concrete footpath connection on eastern side of Glenbrook St
 - Car parking and bus stop
 - Safer crossing point for pedestrians accessing Robinson Park



AERIAL PLAN

4. Existing Play Equipment:

- The Draft Sport, Play, Recreation and Open Space (SPROS) report (Voume 2: Planning for Play) recommends replacing the existing equipment and maintaining the current "Local" classification.
- The SPROS report lists this playspace as a "High" priority upgrade.
- The existing location is disconnected from surrounding paths and infrastructure and close to adjacent properties.
- There is limited shade benefit from existing trees at the current location.
- The existing location does not make the most of expansive views back towards the Blue Mountains escarpment.



5. Potential alternative location for new playspace:

- Connected to Glenbrook Road / safer pedestrian crossing point.
- Potential to utilise on-street parking and car park adjacent to Children's Centre.
- Level space with expansive views to Blue Mountains to the west.

